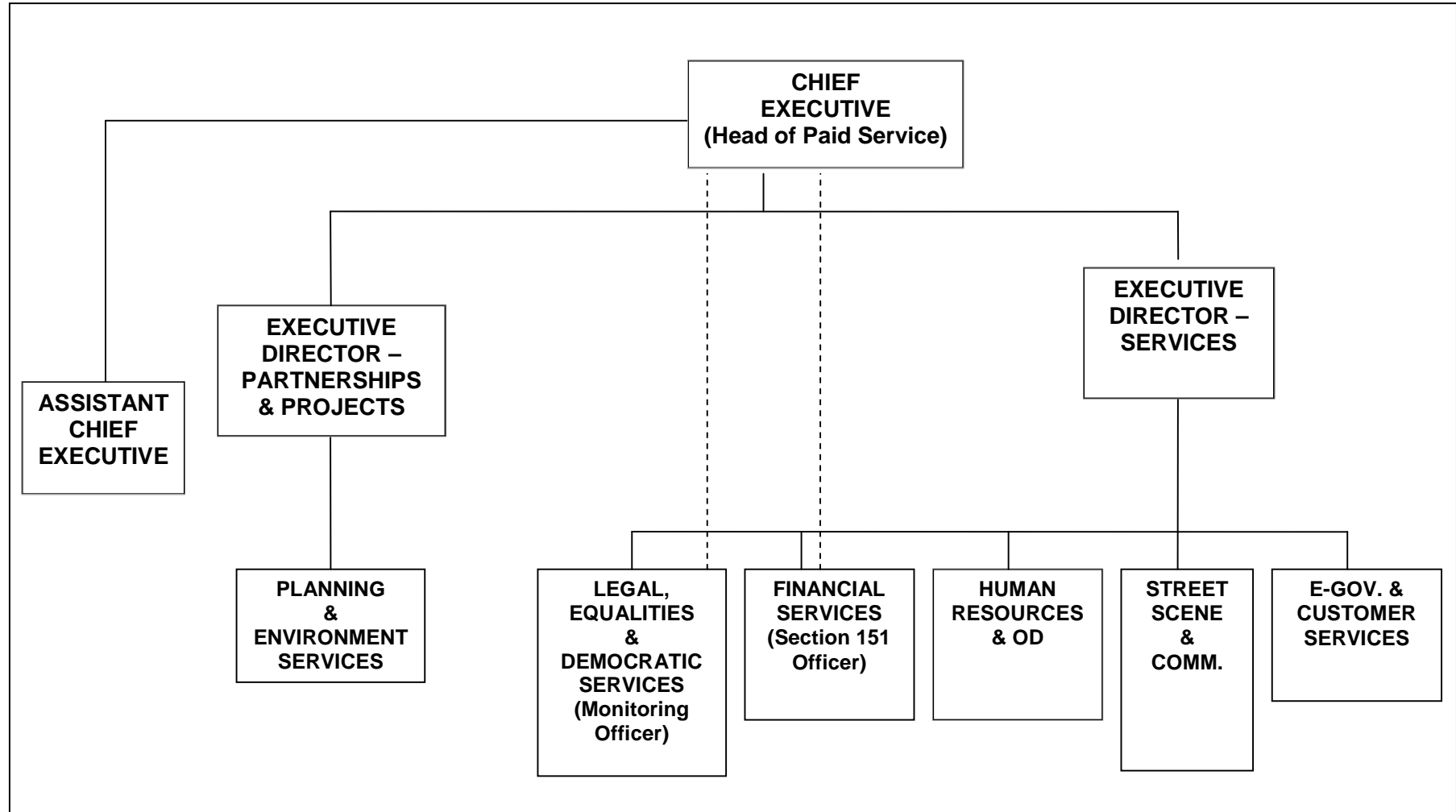


BROMSGROVE DISTRICT COUNCIL MANAGEMENT STRUCTURE



EXECUTIVE DIRECTOR (SERVICES) – Tony Beirne

Joanne Pitman	Claire Felton	Jayne Pickering	Deb Poole	Mike Bell
Head of Human Resources & Organisational	Head of Legal, Equalities & Democratic Services	Head of Financial Services	Head of E-Government & Customer	Head of Street Scene & Community
<ul style="list-style-type: none"> •Human Resources & Welfare •Organisational Development •Training & Development •Health & Safety •Diversity/Equalities •Social Inclusion •Workforce Planning •Succession Planning •Payroll •Member Development 	<ul style="list-style-type: none"> •Professional Legal Advice & Services •Election & Electoral Services, Periodic Electoral Review •Civic Support •Democratic Services & Member Support •Corporate Administration/ Central Post Opening & Reception •Knowledge Management •Monitoring Officer Role, Probity & Standards •Advice to Parishes •Freedom of Information, Data Protection •Property, Assets & Facilities Management 	<ul style="list-style-type: none"> •Accounts & Financial Management & Advice •Corporate Income & Debt Management •Procurement •Revenues & Benefits •Audit (additional reporting Line to Corporate Director, Resources) •Risk Management 	<ul style="list-style-type: none"> •I.C.T. •E Government •E Commerce •Website •Printing & Reprographics •Customer Service Centre •Business Process Re-engineering (BPR) 	<ul style="list-style-type: none"> •Car Parks/Shopmobility •CCTV & Lifeline Operation & Development •Street Scene •Street Cleansing •Grounds Maintenance •Highways •Cesspools/Sewers •Public Conveniences •Refuse & Recycling •Waste Management, Policy, Promotion, Management •Fly Tipping, Bill Posting •Abandoned Vehicles •Pest & Dog Controls •Engineering Design •Community Cohesion & Community Safety •Community Transport/Bus Passes/ Concessionary Fares •Grant Aid •Health Education/Interventions •Arts Development •Sports Development •Children & Young People •Older People •Voluntary Sector & Community Networks, Grant Aid •Tourism Development •Museum •Leisure/Sports Centres/Dual Use Facilities

EXECUTIVE DIRECTOR (PARTNERSHIPS AND PROJECTS) – Phil Street

David Hammond

**Head of Planning &
Environment Services**

(Regulatory Services)

- Planning & Local Development Framework
- Development Control
- Building Control
- Licenses (all)
- Land Charges
- Environmental Health/Protection/
Enforcement
- Public Health & safety
- Food Safety
- Emergency Planning
- Conservation
- Improvement Grants
- Travellers
- Agenda 21(Energy Efficiency)
- Housing Strategy and Enabling
Role etc.

